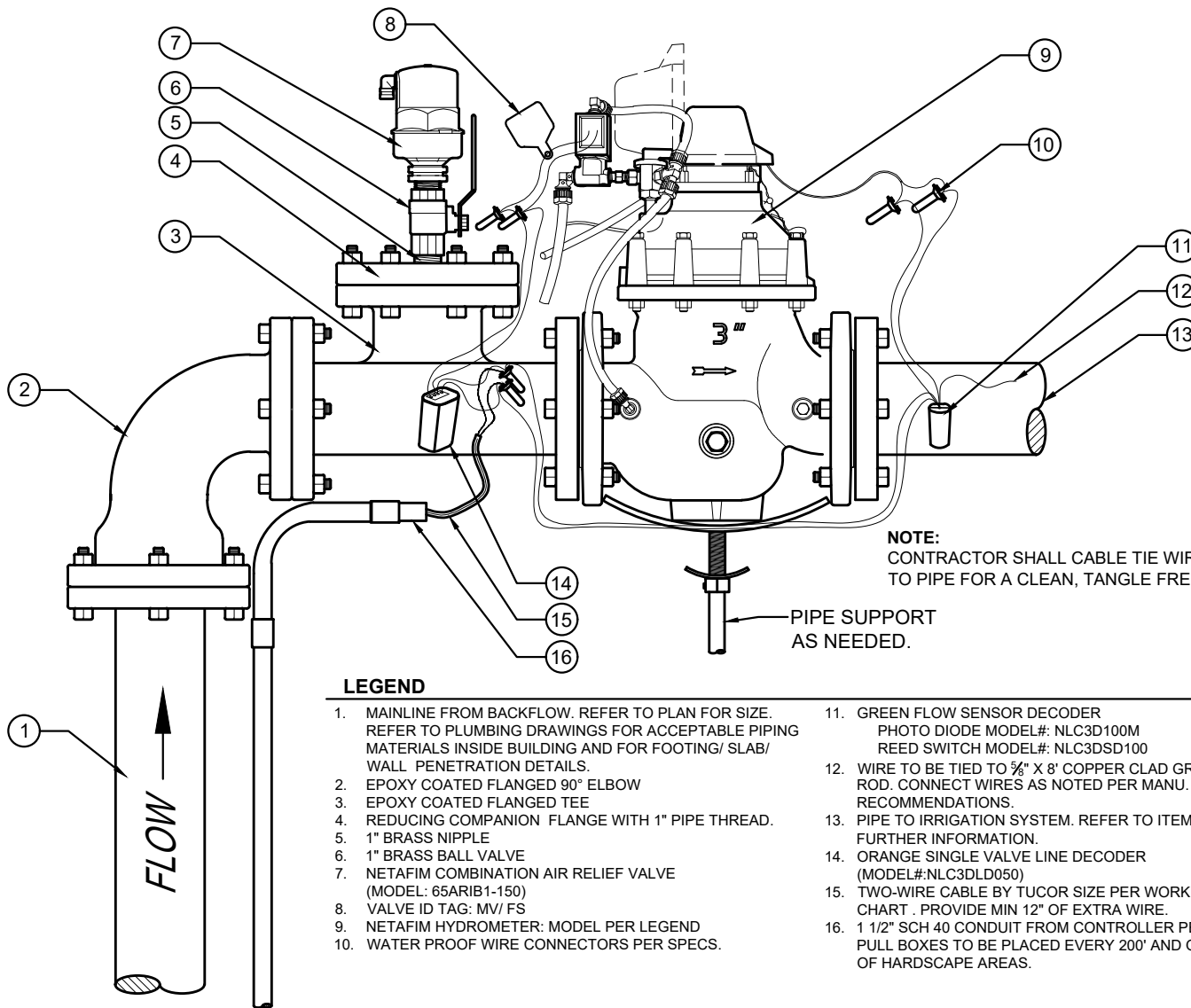


LIMITATIONS:

ALLOWING FOR A WIDE VARIETY OF APPLICATIONS AND CONDITIONS, NETAFIM IRRIGATION INC. IS NOT RESPONSIBLE FOR CORRECTNESS OR APPLICABILITY TO PURPOSE OR COMPATIBILITY TO ANY SITE OR JOB CONDITION. WARRANTY FOR SUITABILITY IS NOT GIVEN OR IMPLIED. MODIFICATIONS FOR SPECIFIC PURPOSES MAY BE NECESSARY AND ARE THE SPECIFIER'S RESPONSIBILITY. THE USE OF THESE DETAILS SHALL NOT BE RESTRICTED AND PUBLICATION THEREOF IS NOT LIMITED TO ANY PURPOSE. REPRODUCTION, PUBLICATION AND REUSE BY ANY METHOD IN WHOLE OR PART IS FULLY AUTHORIZED. OWNERSHIP IS RETAINED BY NETAFIM IRRIGATION INC. VISUAL CONTACT WITH THESE DETAILS SHALL CONSTITUTE PRIMA FACIE EVIDENCE OF THE ACCEPTANCE OF THESE RESTRICTIONS.



NOTE:
CONTRACTOR SHALL CABLE TIE WIRES AND DECODERS TO PIPE FOR A CLEAN, TANGLE FREE, INSTALLATION.

PIPE SUPPORT
AS NEEDED.

LEGEND

- | | |
|--|--|
| <ol style="list-style-type: none"> 1. MAINLINE FROM BACKFLOW. REFER TO PLAN FOR SIZE. REFER TO PLUMBING DRAWINGS FOR ACCEPTABLE PIPING MATERIALS INSIDE BUILDING AND FOR FOOTING/ SLAB/ WALL PENETRATION DETAILS. 2. EPOXY COATED FLANGED 90° ELBOW 3. EPOXY COATED FLANGED TEE 4. REDUCING COMPANION FLANGE WITH 1" PIPE THREAD. 5. 1" BRASS NIPPLE 6. 1" BRASS BALL VALVE 7. NETAFIM COMBINATION AIR RELIEF VALVE (MODEL#: 65ARIB1-150) 8. VALVE ID TAG: MV/ FS 9. NETAFIM HYDROMETER: MODEL PER LEGEND 10. WATER PROOF WIRE CONNECTORS PER SPECS. | <ol style="list-style-type: none"> 11. GREEN FLOW SENSOR DECODER PHOTO DIODE MODEL#: NLC3D100M REED SWITCH MODEL#: NLC3DSD100 12. WIRE TO BE TIED TO 3/8" X 8' COPPER CLAD GROUNDING ROD. CONNECT WIRES AS NOTED PER MANU. RECOMMENDATIONS. 13. PIPE TO IRRIGATION SYSTEM. REFER TO ITEM 1 FOR FURTHER INFORMATION. 14. ORANGE SINGLE VALVE LINE DECODER (MODEL#:NLC3DL050) 15. TWO-WIRE CABLE BY TUCOR SIZE PER WORKING RANGE CHART . PROVIDE MIN 12" OF EXTRA WIRE. 16. 1 1/2" SCH 40 CONDUIT FROM CONTROLLER PER SPECS. PULL BOXES TO BE PLACED EVERY 200' AND ON EACH SIDE OF HARDSCAPE AREAS. |
|--|--|

NOTES TO DESIGNER:

1. NO STRAIGHT PIPE UPSTREAM AND DOWNSTREAM OF HYDROMETER IS REQUIRED.
2. RECOMMEND INSTALLING AIR/ VACUUM RELIEF VALVE PRIOR TO METER, EVERY 1500 FEET AND AT END OF RUNS. INSTALL AS INDICATED PER NETAFIM DETAIL D274.
3. THE INSTALLATION OF AN ISOLATION VALVE UPSTREAM OF THE HYDROMETER IS RECOMMENDED.
4. ALL THREADED CONNECTIONS SHALL RECEIVE TEFLON TAPE PER TAPE MANUFACTURERS RECOMMENDATIONS.
5. AIR RELIEF VALVE AND HYDROMETER SOLENOID VENT TO AIR. A DRAIN MUST BE PROVIDED WITHIN BUILDING AREAS AND FLOOR SHALL SLOPE AWAY FROM ELECTRICAL COMPONENTS.

00

HYDROMETER 3" FLG MANUAL ELECTRIC WITH 2 -WIRE DECODERS

NOT TO SCALE

