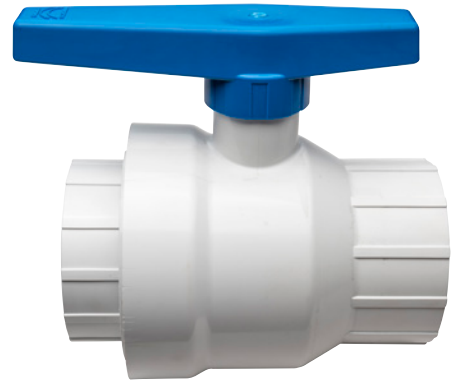


MANUAL 4" BALL VALVE

SUPERIOR QUALITY BALL VALVE DESIGNED FOR LONG LIFE IN HEAP LEACHING APPLICATIONS

The Netafim Manual 4" Ball Valve for Mining combines all of the desired features of high-quality ball valves with the 'mine tough' requirement to perform under adverse conditions.

The ball valve was designed exclusively for mining applications and utilizes the highest quality components for reliable operation in copper, gold, silver and other mining applications requiring superior performance, ease of on/off operation and long-life durability.



FEATURES & BENEFITS

- High flow path design maximizes flow.
- Full 150 psi pressure rating provides reliable operation over a broad pressure range.
- Hex-shaped stem design allows the valve to be operated with a wrench or socket if the handle is removed.
- Factory set carrier-ring optimizes tension between the ball and ball seat for ease in operating and closing.
- Double stem Viton O-rings for positive sealing and durability in the most corrosive environments.
- PTFE (Teflon™) ball seats minimize friction for superior sealing and additional ease in opening and closing.
- Bi-directional flow ensures error-free installations.
- PVC body rated up to 140° F (60° C) for use in adverse conditions.

APPLICATIONS

- Copper, Gold and Silver Mines
- Applications where reliable manual on-off control is required

SPECIFICATIONS

- Working Pressure: 150 psi @ 70°F
- Maximum Flow: 675 GPM
- PVC Body rated to 140°F
- Size: 4"
- Inlet/Outlet Connections: Female Pipe Thread

MATERIALS

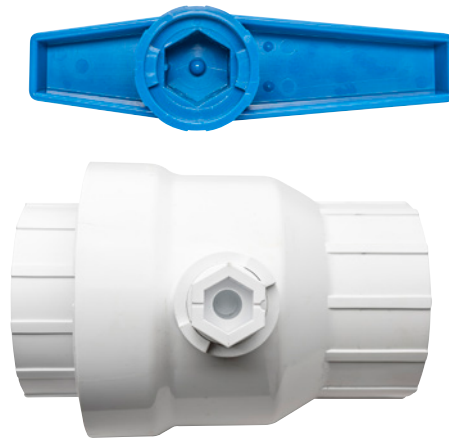
- Body: PVC
- Socket: PVC
- Carrier Ring: PVC
- Ball Seats: PTFE (Teflon™)
- O-Rings: Viton
- Ball: PVC
- Handle: ABS
- Stem: PVC

BALL VALVES

While other Ball Valves have a noticeably reduced port, the Netafim Ball Valve has a higher flow path design. This maximizes flow through when installed along a pipeline and increases flushing performance when installed on line ends.



The solid one piece handle can be removed or replaced without tools. The 1" internal and 1 1/2" external hex shape of the stem allows the valve to be operated with a wrench or socket if the handle is removed.



ORDERING INFORMATION

MODEL NUMBER	DESCRIPTION
MFV4FNPT	4" BALL VALVE WITH INTEGRAL HANDLE
MFV4FNPT-HANDLE	REPLACEMENT HANDLE FOR 4" BALL VALVE

DIMENSIONS & WEIGHT

SIZE	HEIGHT	LENGTH	WEIGHT
4"	10.5"	11.4"	9.5 LBS.



NETAFIM USA
 5470 E. HOME AVE.
 FRESNO, CA 93727
 CS 888 638 2346
www.netafimusa.com